

CLOSING THE GAP BETWEEN HYDRAULICS AND ELECTRONICS

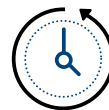
**INTRODUCING THE BRAND NEW BOLTIGHT INTELLIGENT ELECTRIC PUMP (IEP)
A SMART SOLUTION FROM THE NORD-LOCK GROUP**



Automatic hydraulic
pressure top-up feature



Data logging



Significant time
and labour savings



Wireless operation

DATA LOGGING AND SMART TECHNOLOGY

The Boltight Intelligent Electric Pump (IEP) is an electric driven smart pump that incorporates multiple features:

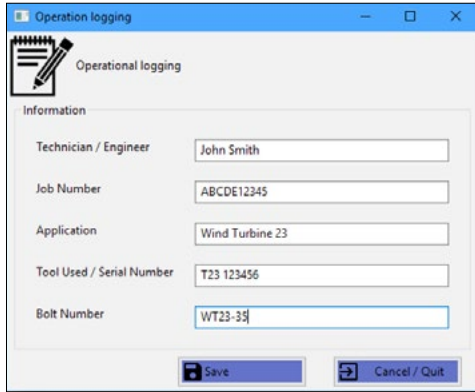
- Usable with Windows 10 Laptops and tablets
- Up to 30 metre (98.5 feet) remote operation
- Dedicated integrated wireless network
- Suitable for single or multiple tensioning applications up to 1500 bar (21,750 psi)
- User definable parameters
- Auto pressure top up
- Simple hands free operation
- Pressure verification removes human error
- Emergency Stop, instantly vents pressure and switches power off
- Data logging and storage function

SPECIFICATION	1,500 BAR PUMP
Maximum Output Pressure	1,500 bar (21,750 psi)
Maximum Pressure Valve	Manually adjustable pressure relief valve
Power Rating	0.75kW
Noise Level	82db (A)
Weight (without oil)	32.5 kg (71.7 lbs)
Weight (with oil)	37.5kg (82.7 lbs)
Size	Width 400mm x Height 430mm x Depth 450mm
Hydraulic Oil Capacity	5 Litres (1.1 UK / 1.3 US gallons)
Recommended Hydraulic oil	ISO-32 or ISO-46
Pump Capacity	1st Stage: 3.5 litres per min. up to 30 bar (psi) 2nd Stage 0.4 litres per min. up to 1500 bar (21,750 psi) at 50Hz (at 60Hz +20%)
Motor Options	200V-240V, 50/60Hz single phase 110V-120V 50/60Hz single phase Protection Rating: IP54

AUTO TENSIONING OPERATIONS

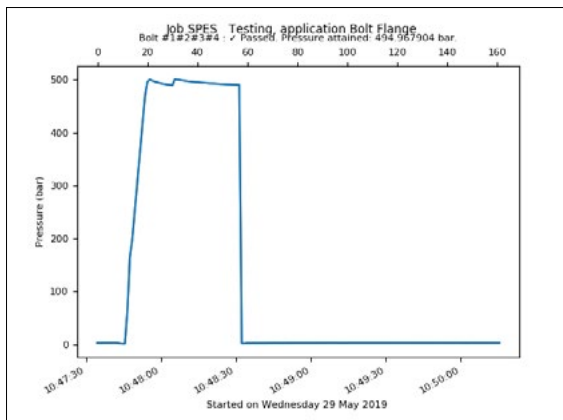
Operation logging parameters

Project specific criteria to suit your tensioning requirements



Pressure top up

Pressure compensation ensures accurate and repeatable tensioning



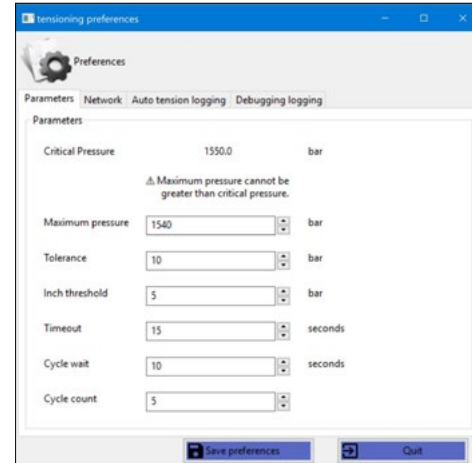
Outputs in Microsoft Excel

Real time data logging saved in Microsoft Excel format

Time	Pressure (bar)	Pressure (bar)
08 April 2019 11:15:14.34	11:15:14	126.74
08 April 2019 11:15:15.44	11:15:15	127.84
08 April 2019 11:15:16.35	11:15:16	128.75
08 April 2019 11:15:17.34	11:15:17	129.74
08 April 2019 11:15:18.40	11:15:18	130.8
08 April 2019 11:15:19.54	11:15:19	131.94
08 April 2019 11:15:20.57	11:15:20	132.97
08 April 2019 11:15:21.34	11:15:21	133.74
08 April 2019 11:15:22.40	11:15:22	134.8
08 April 2019 11:15:23.43	11:15:23	135.83
08 April 2019 11:15:24.45	11:15:24	136.85
08 April 2019 11:15:25.34	11:15:25	137.74
08 April 2019 11:15:26.34	11:15:26	138.74
08 April 2019 11:15:27.53	11:15:27	139.93
08 April 2019 11:15:28.49	11:15:28	140.88
08 April 2019 11:15:29.37	11:15:29	141.77
08 April 2019 11:15:30.37	11:15:30	142.77

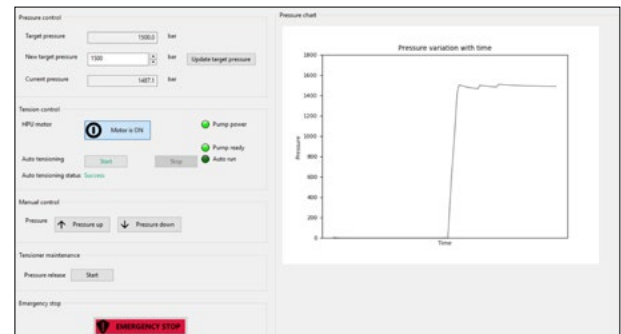
Auto tensioning preferences

Customisable operating parameters



Remote wireless operation

30 metre (98.5 feet) range increases operator safety

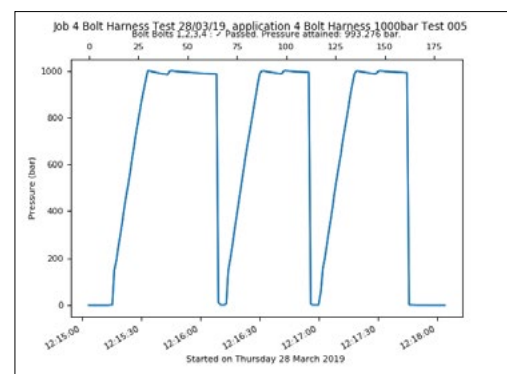


Wireless data logging

Pass/Fail confirmation

	0	1
0	Technician / Engineer	Samad Ludi
1	Job Number	D85 8 TSR4 080419
2	Application	M39 Flange 24 Bolts
3	Tool Used / Serial Number	TSR 4
4	Bolt Number	8 Off
5	Pass / Fail	✓ Passed
6	Pressure Attained	295.78
7	Peak pressure	-1
8	Peak pressure occurrence	08 April 2019 11:13:06.79

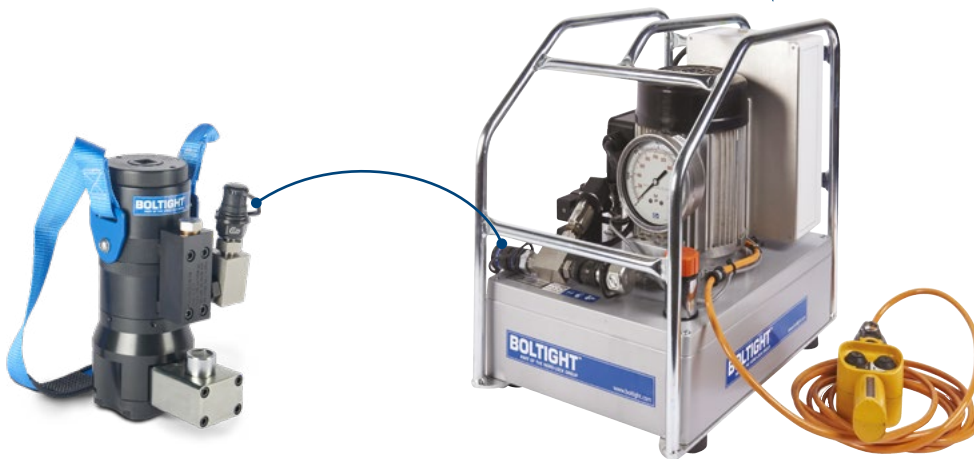
Pressure Graph



THE FUTURE OF ENGINEERING IS SMART

For decades the Nord-Lock Group have been offering ingenious solutions to applications worldwide.

Supporting the future of engineering, several of those solutions are now integrating modern technology to become even smarter www.nord-lock.com/smart



**DOWNLOAD THE VUFORIA VIEW APP AND
SCAN THE MARK FOR SUPPORTING MATERIAL**

Boltight Limited
Tel: +44 (0) 1922 669222
Email: sales.boltight.uk@nord-lock.com
www.nord-lock.com/boltight

Nord-Lock Group
Tel: +44 (0) 1264 355557
Email: sales.uk@nord-lock.com
www.nord-lock.com

© Copyright 2019 Nord-Lock Group.
NORD-LOCK, SUPERBOLT, BOLTIGHT and EXPANDER SYSTEM are trademarks owned by different companies within the Nord-Lock Group.
All other logos, trademarks, registered trademarks or service marks used herein are the property of the Nord-Lock Group. All rights reserved.

NORD-LOCK
GROUP