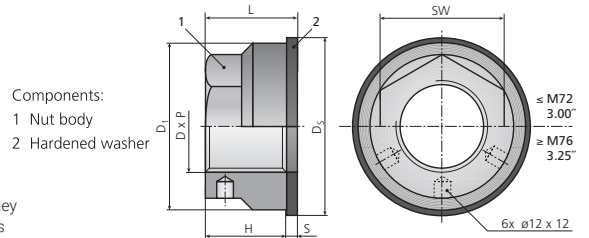


SX8

Flexnut series

standard

SX8 series Flexnuts are designed to flex within the common bolt-stress range for most Superbolt tensioners. They are ideal for reducing stress concentrations in the threads, and for adding flexibility to joints. SX8 series Flexnuts are suited for use with SB8 bolt-style tensioners or in conjunction with through-studs and MT nut-style tensioners.



Metric	Size			Nut body			Hardened washer		Height tot	Weight est	Preload capacity max	
	Thread	Available pitch			1			2				
Part number	D [mm]	P ₁ [mm]	P ₂	P ₃	D ₁ [mm]	H [mm]	SW	D ₂ [mm]	S [mm]	L [mm]	[kg]	[kN]
SX8-M20x.../W	M20	2.5	1.5	1	35	17	27	38	4	21	0.10	140
SX8-M24x.../W	M24	3	2	1.5	42	20	33	45	4	24	0.15	187
SX8-M27x.../W	M27	3	2	1.5	47	23	36	50	5	28	0.20	285
SX8-M30x.../W	M30	3.5	2	1.5	52	25	39	56	5	30	0.25	286
SX8-M33x.../W	M33	3.5	2	1.5	57	28	42	63	6	34	0.40	380
SX8-M36x.../W	M36	4	3	1.5	62	31	48	69	6	37	0.50	460
SX8-M39x.../W	M39	4	3	1.5	66	33	51	72	6	39	0.60	610
SX8-M42x.../W	M42	4.5	3	1.5	73	36	56	76	6	42	0.75	610
SX8-M45x.../W	M45	4.5	3	1.5	77	38	57	81	6	44	0.85	935
SX8-M48x.../W	M48	5	3	1.5	83	41	64	86	6	47	1.10	935
SX8-M52x.../W	M52	5	3	2	88	44	67	94	6	50	1.25	970
SX8-M56x.../W	M56	5.5	4	2	97	48	72	100	6	54	1.60	1120
SX8-M60x.../W	M60	5.5	4	2	105	51	76	110	8	59	2.05	1310
SX8-M64x.../W	M64	6	4	2	111	54	80	120	8	62	2.35	1690
SX8-M72x.../W	M72	6	4	2	125	61	90	130	8	69	3.15	1690
SX8-M76x.../W	M76	6	4	2	132	64	—*	138	10	74	4.20	2530
SX8-M80x.../W	M80	6	4	2	139	68	—*	145	10	78	5.20	2530
SX8-M90x.../W	M90	6	4	2	156	76	—*	160	10	86	7.10	3380
SX8-M100x.../W	M100	6	4	2	173	85	—*	180	10	95	9.00	3380
SX8-M110x.../W	M110	6	4	2	191	94	—*	202	10	104	13.00	4200
SX8-M120x.../W	M120	6	4	2	208	102	—*	215	12	114	16.75	5600
SX8-M125x.../W	M125	6	4	2	218	108	—*	227	12	120	19.50	5600
SX8-M130x.../W	M130	6	4	2	226	111	—*	234	12	123	21.25	6300
SX8-M140x.../W	M140	6	4	2	243	119	—*	253	12	131	26.25	7000
SX8-M150x.../W	M150	6	4	2	260	127	—*	271	12	139	31.75	7000
SX8-M160x.../W	M160	6	4	-	278	136	—*	290	12	148	38.75	8400

- Other sizes, thread pitches or thread per inch (TPI) may be available.
- Dimensions listed are representative.
* Indicates a round shape instead of hex shape of the nut.