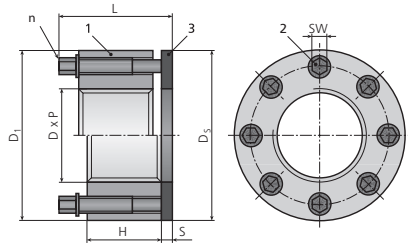


MT

Nut-style tensioner standard

MT tensioners fit in the same space as a heavy hex nut and feature hex-head jackbolts. They're suited for use on general mechanical applications.

Components:
1 Nut body
2 Jackbolts
3 Hardened washer



Imperial	Size			Nut body		Jackbolt		Hardened washer		Height tot	Weight est	Preload* nom	Torque* nom	Preload capacity* max	
	Thread	Available TPI			1	2	3	3							
Part number	D [in]	P ₁	P ₂	P ₃	D ₁ [in]	H [in]	n	SW [in]	D _s [in]	S [in]	L [in]	F [LBf]	M [Lbft]		
MT-075-.../W	3/4	10	16	-	1.47	0.70	4	3/16	1.50	0.13	1.38	0.31	20,400	14	27,200
MT-087-.../W	7/8	9	14	-	1.60	0.70	6	3/16	1.63	0.13	1.38	0.34	30,600	14	40,800
MT-100-.../W	1	8	12	14	1.90	0.93	6	1/4	2.00	0.19	1.71	0.68	48,600	27	64,800
MT-112-.../W	1-1/8	7	8	12	2.08	0.93	6	1/4	2.13	0.19	1.71	0.79	48,600	27	64,800
MT-125-.../W	1-1/4	7	8	12	2.25	0.94	8	1/4	2.38	0.19	1.71	0.92	64,800	27	86,400
MT-137-.../W	1-3/8	6	8	12	2.46	1.20	6	5/16	2.50	0.19	2.12	1.40	73,800	49	98,400
MT-150-.../W	1-1/2	6	8	12	2.70	1.20	8	5/16	2.75	0.19	2.12	1.70	98,400	49	131,200
MT-162-.../W	1-5/8	6	8	12	2.96	1.20	8	5/16	2.88	0.19	2.12	2.01	98,400	49	131,200
MT-175-.../W	1-3/4	5	8	12	3.08	1.42	8	3/8	3.13	0.25	2.49	2.53	129,600	75	172,800
MT-187-.../W	1-7/8	6	8	12	3.59	1.60	8	7/16	3.50	0.25	2.85	4.07	175,200	114	233,600
MT-200-.../W	2	4.5	8	12	3.59	1.60	8	7/16	3.50	0.25	2.85	3.87	175,200	114	233,600
MT-225-.../W	2-1/4	4.5	8	12	3.95	1.60	8	7/16	3.75	0.25	2.85	4.51	175,200	114	233,600
MT-250-.../W	2-1/2	4	8	12	4.45	2.10	8	9/16	4.50	0.31	3.61	7.82	285,600	233	380,800
MT-275-.../W	2-3/4	4	8	12	4.70	2.10	8	9/16	4.75	0.31	3.61	8.36	285,600	233	380,800
MT-300-.../W	3	4	6	8	5.20	2.10	12	9/16	5.00	0.31	3.61	10.30	428,400	233	571,200
MT-325-.../W	3-1/4	4	6	8	5.45	2.20	12	9/16	5.00	0.31	3.61	11.04	428,400	233	571,200
MT-350-.../W	3-1/2	4	6	8	5.70	2.30	16	9/16	5.50	0.31	3.87	12.62	571,200	233	761,600
MT-375-.../W	3-3/4	4	6	8	6.20	2.40	16	9/16	5.50	0.31	3.87	15.08	571,200	233	761,600
MT-400-.../W	4	4	6	8	6.45	2.60	18	9/16	6.00	0.31	4.19	17.31	642,600	233	856,800
MT-425-.../W	4-1/4	4	6	8	6.95	3.00	16	5/8	6.40	0.38	4.76	23.41	806,400	390	1,075,200
MT-450-.../W	4-1/2	4	6	8	7.20	3.00	16	5/8	6.65	0.38	4.76	24.44	806,400	390	1,075,200
MT-475-.../W	4-3/4	4	6	8	7.45	3.20	18	5/8	6.90	0.38	5.06	27.13	907,200	390	1,209,600
MT-500-.../W	5	4	6	8	7.70	3.30	20	5/8	7.15	0.38	5.06	28.83	1,008,000	390	1,344,000
MT-525-.../W	5-1/4	4	6	8	8.45	3.70	22	5/8	7.65	0.38	5.36	40.06	1,108,800	390	1,478,400
MT-550-.../W	5-1/2	4	6	8	8.45	3.70	22	5/8	7.65	0.38	5.36	37.56	1,108,800	390	1,478,400
MT-575-.../W	5-3/4	4	6	8	8.95	4.00	24	5/8	8.15	0.38	5.76	46.26	1,209,600	390	1,612,800
MT-600-.../W	6	4	6	8	8.95	4.00	24	5/8	8.15	0.38	5.76	43.32	1,209,600	390	1,612,800

* All preload and torque values are provided for general reference. Applied preload plus additional bolt load from service should not exceed the maximum bolt or stud capacity. Contact your local Nord-Lock sales office for assistance in determining proper preload and torque settings for your application.
- Other sizes, thread pitches or thread per inch (TPI) may be available.
- Dimensions listed are representative.