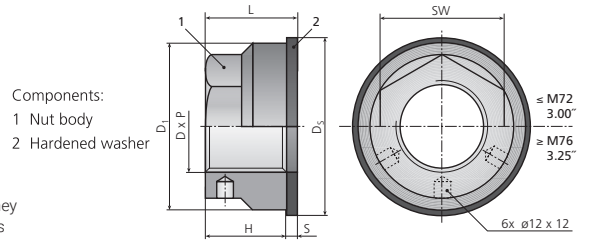


SX8

Flexnut series

standard

SX8 series Flexnuts are designed to flex within the common bolt-stress range for most Superbolt tensioners. They are ideal for reducing stress concentrations in the threads, and for adding flexibility to joints. SX8 series Flexnuts are suited for use with SB8 bolt-style tensioners or in conjunction with through-studs and MT nut-style tensioners.



Imperial	Size			Nut body			Hardened washer		Height tot	Weight est	Preload capacity max	
	Thread	Available TPI			1			2				
Part number	D [in]	P ₁	P ₂	P ₃	D ₁ [in]	H [in]	SW	D ₂ [in]	S [in]	L [in]	[Lb]	[LBf]
SX8-075-.../W	3/4	10	16	-	1.30	0.64	1	1.50	0.13	0.77	0.17	27,200
SX8-087-.../W	7/8	9	14	-	1.52	0.74	1-1/8	1.62	0.13	0.87	0.23	40,800
SX8-100-.../W	1	8	12	14	1.73	0.85	1-5/16	2.00	0.16	1.01	0.38	64,800
SX8-112-.../W	1-1/8	7	8	12	1.95	0.96	1-1/2	2.12	0.16	1.12	0.52	64,800
SX8-125-.../W	1-1/4	7	8	12	2.17	1.06	1-5/8	2.50	0.19	1.25	0.73	86,400
SX8-137-.../W	1-3/8	6	8	12	2.38	1.17	1-3/4	2.50	0.19	1.36	0.87	98,400
SX8-150-.../W	1-1/2	6	8	12	2.60	1.28	2	3.00	0.25	1.53	1.33	131,200
SX8-162-.../W	1-5/8	6	8	12	2.81	1.38	2-1/8	3.00	0.25	1.63	1.54	141,100
SX8-175-.../W	1-3/4	5	8	12	3.03	1.49	2-1/4	3.25	0.25	1.74	1.85	172,800
SX8-187-.../W	1-7/8	6	8	12	3.25	1.59	2-1/2	3.50	0.25	1.84	2.54	233,600
SX8-200-.../W	2	4.5	8	12	3.46	1.70	2-5/8	3.75	0.25	1.95	2.76	233,600
SX8-225-.../W	2-1/4	4.5	8	12	3.90	1.91	3	4.22	0.31	2.22	4.07	275,400
SX8-250-.../W	2-1/2	4	8	12	4.33	2.13	3-1/4	4.70	0.31	2.44	5.31	380,800
SX8-275-.../W	2-3/4	4	8	12	4.76	2.34	3-5/8	4.95	0.31	2.65	7.46	380,800
SX8-300-.../W	3	4	6	8	5.23	2.55	4	5.45	0.38	2.93	9.18	571,200
SX8-325-.../W	3-1/4	4	6	8	5.63	2.76	—*	5.95	0.38	3.14	12.08	571,200
SX8-350-.../W	3-1/2	4	6	8	6.06	2.98	—*	6.45	0.38	3.36	14.98	761,600
SX8-375-.../W	3-3/4	4	6	8	6.50	3.19	—*	6.94	0.38	3.57	18.36	761,600
SX8-400-.../W	4	4	6	8	6.93	3.40	—*	7.45	0.43	3.83	22.55	856,800
SX8-425-.../W	4-1/4	4	6	8	7.36	3.61	—*	7.95	0.43	4.04	28.55	1,075,200
SX8-450-.../W	4-1/2	4	6	8	7.79	3.83	—*	8.20	0.43	4.26	30.98	1,116,600
SX8-475-.../W	4-3/4	4	6	8	8.23	4.04	—*	8.70	0.43	4.47	38.95	1,209,600
SX8-500-.../W	5	4	6	8	8.66	4.25	—*	9.45	0.50	4.75	46.80	1,344,000
SX8-525-.../W	5-1/4	4	6	8	9.09	4.46	—*	9.45	0.50	4.96	52.48	1,478,400
SX8-550-.../W	5-1/2	4	6	8	9.53	4.68	—*	9.95	0.50	5.18	56.03	1,478,400
SX8-575-.../W	5-3/4	4	6	8	9.96	4.89	—*	10.45	0.50	5.39	65.49	1,612,800
SX8-600-.../W	6	4	6	8	10.39	5.10	—*	10.95	0.50	5.60	72.84	1,612,800

- Other sizes, thread pitches or thread per inch (TPI) may be available.

- Dimensions listed are representative.

* Indicates a round shape instead of hex shape of the nut.