



SUPERBOLT® TOOL

Reduce maintenance time with the Superbolt® Tool



EFFICIENT

Installs Superbolt tensioners
fives times quicker

SAFE, HANDS-FREE USE

No need to hold the tool in place
while using

CUSTOMIZED SOLUTION

Calibrated and customized
for rope shovel side frames

ACCURATE

All the benefits of tensioning
with faster installation/removal

THE CHALLENGE

Due to their accuracy and safety, Superbolt tensioners have been used to secure the sideframes of rope shovels used in mining for decades.

Mounting large Superbolt nuts such as these has always been a challenging task due to the time and effort exerted when tightening by hand. The same challenges also exist during the disassembly of Superbolt products.

THE SOLUTION

The Superbolt Tool is a solution that considerably reduces assembly times for Superbolt nuts. Thanks to its innovative design, the Superbolt Tool adjusts all jackbolts simultaneously with great precision. In addition, it lessens the effort required by operators to complete this task, minimizing their exposure to injury or fatigue.

The Superbolt Tool positively impacts the productivity of mining operations, allowing maintenance to be carried out quickly and safely.



MINING SUCCESS STORY



DATE

March 2023

LOCATION

Carajás, Brasil

APPLICATION

Side frame bolt tightening

CLIENT

Grupo Hidrau Torque GHT

PRODUCT

Superbolt Tool



“ The client was extremely satisfied with the work completed. I highly recommend the Superbolt Tool product due to its capacity on meeting the adjustment deadline and ease of operation.

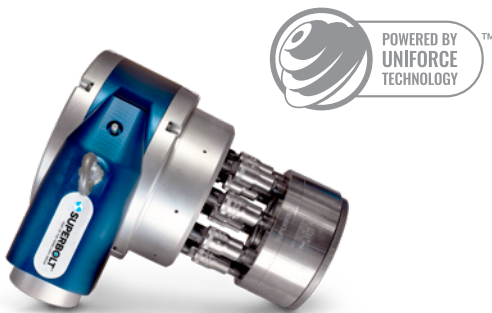
– Luiz Leite Goiano
Grupo Hidrau Torque GHT



THE OUTCOME

Satisfied Customer — Superbolt® Tool

The average time to tighten each Superbolt nut was approximately 7-8 minutes. Taking into consideration the pre-torque process and the subsequent manual check, the process for each frame (20 bolts) totals three hours.



Superbolt® Tool

FIND OUT MORE

The Superbolt Tool provides a fast and accurate application of torque to multiple jackbolts at one time. This tool maintains accurate bolt loading and provides even jackbolt load application, as well as minimizing procedural requirements.

The Superbolt Tool range includes several drive units and cassettes to primarily suit the Superbolt MJT range M33 to M120. Design and delivery times are based on the parameters of each individual project and the sizes needed. Superbolt Tool sales are project-based and available for various CAT and Komatsu rope shovels.

Find out how the Superbolt Tool can solve your bolting challenges at www.nord-lock.com